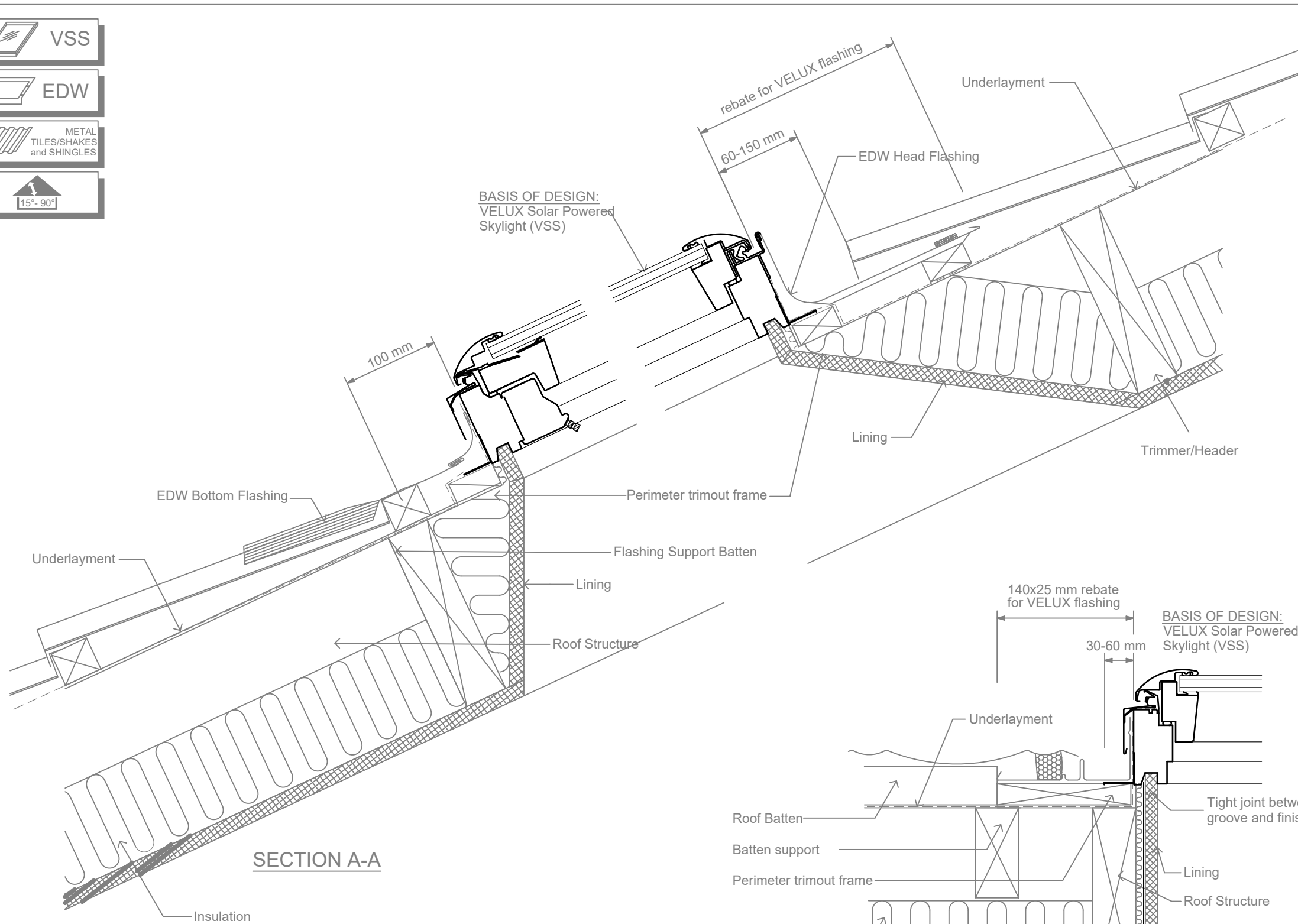


VSS

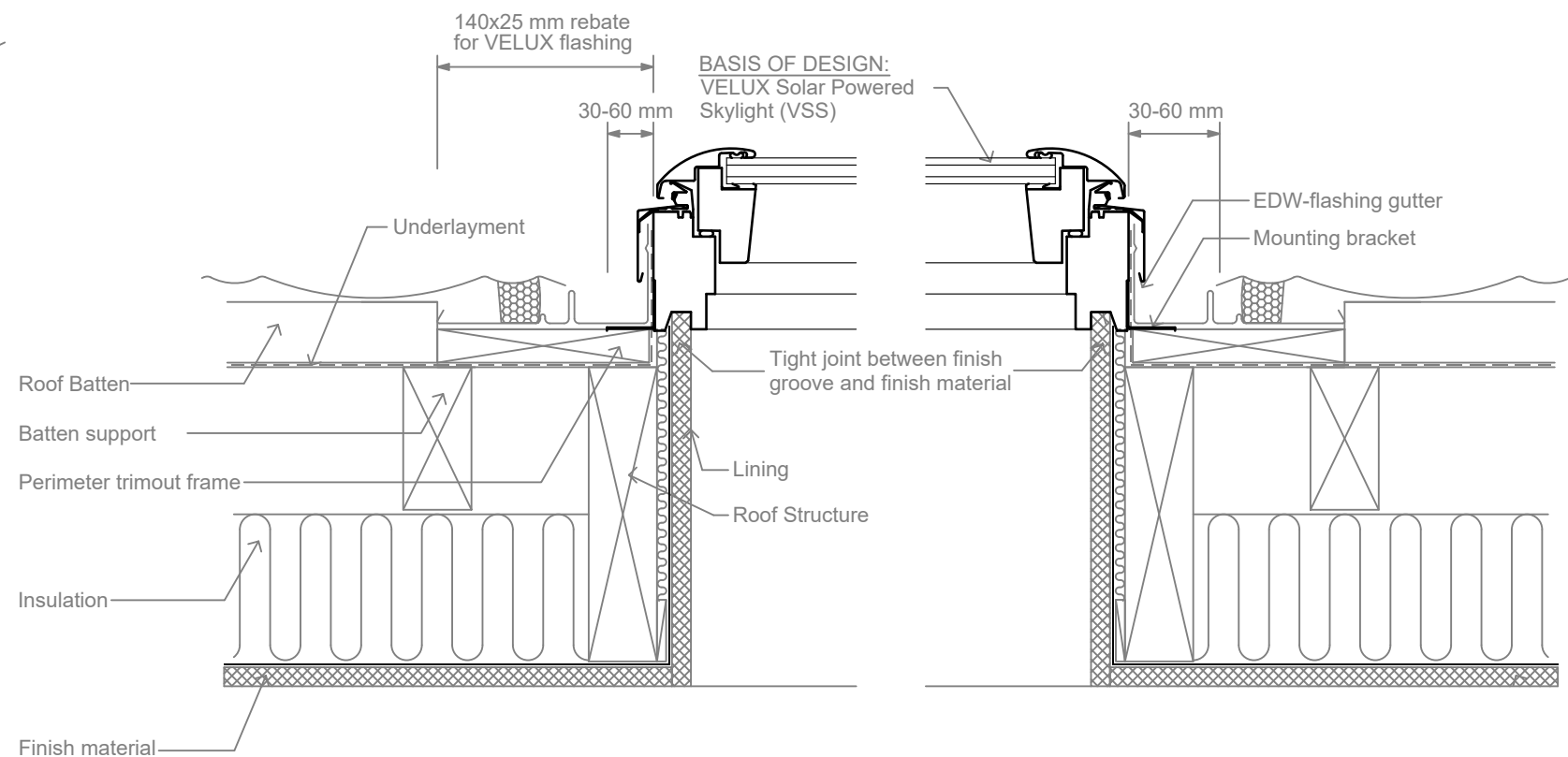
EDW

METAL
TILES/SHAKES
and SHINGLES

15° - 90°

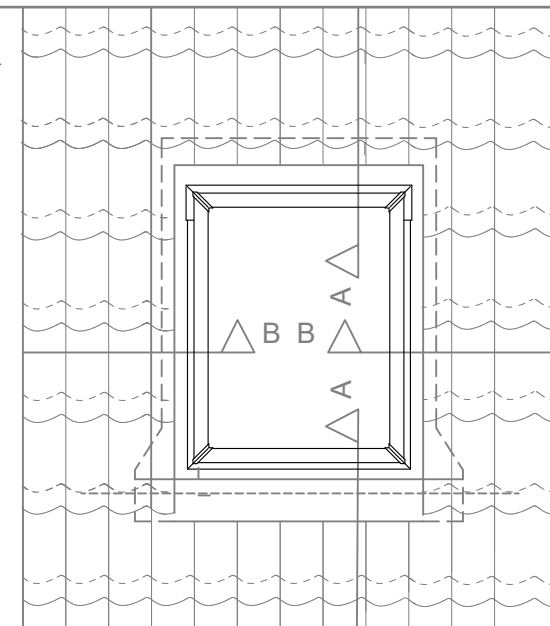


SECTION A-A



SECTION B-B

ELEVATION



VELUX Skylight installed in metal tile shakes or shingle roofing.

Please note:
Ensure that the roof battens are rebated 25 mm around the perimeter of the VELUX Skylight, for the EDW flashing to fit correctly.

VSS - Solar Powered Skylight and EDW Flashing
in Profiled Metal Tile Roofs

VELUX
Sky-Product Management

NEW ZEALAND LTD.
0800 650 445

	Name	Date
Drawn by		Jan 18
Checked by		Jan 18
Drawing No.		